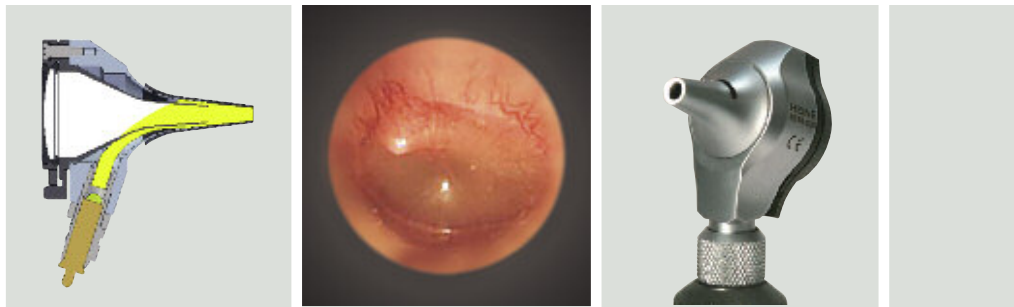




High-quality Fiber Optic (F.O.) illumination with high-intensity XHL Xenon Halogen bulb.



HEINE BETA 200® Fiber Optic Otoscope

The ultimate in performance and quality

Solid, all-metal construction. A quality instrument for the physician's office with Fiber Optic (F.O.) illumination. Large diameter viewing-window. Insufflation port. The swivel window features an airtight seal.



∴ Fiber Optic (F.O.) illumination

∴ All-metal housing

∴ Silicate glass viewing window

- ∴ **Distal Fiber Optic (F.O.) illumination with XHL Xenon Halogen Technology.**
Homogenous, reflex-free illumination of ear canal and tympanum.
- ∴ **Large, scratch-resistant glass viewing window with 3x magnification.**
Unobstructed view, distortion-free image.
- ∴ **Airtight window seal.** Reliable test of tympanic mobility.
- ∴ **Swivelling viewing window built into instrument.**
Useful for instrumentation, cannot be mislaid.
- ∴ **Matt-chrome-plated metal construction.**
Durable and easy to clean.

BETA 200 F.O. Otoscope	2.5V	3.5V
with 4 reusable tips	B-001.11.501	B-002.11.501
same, without tips	B-001.11.500	B-002.11.500
XHL Xenon Halogen spare bulb	X-001.88.077	X-002.88.078

HEINE BETA 200® F.O. ENT Diagnostic Set



Set complete with **BETA 200 Fiber Optic (F.O.) Otoscope**, 1 set of reusable tips, 10 AllSpec disposable tips and spare bulb in hard case with:

	2.5V	3.5V
BETA battery handle	B-141.10.118	
BETA R rechargeable handle		B-141.20.376
BETA TR rechargeable handle and transformer		B-141.20.384
BETA NT rechargeable handle and NT 200 charger		B-141.20.420

HEINE BETA 200® F.O. ENT Diagnostic Set



Set complete: **BETA 200 Ophthalmoscope, BETA 200 F.O. Otoscope**, 1 set of reusable tips, 10 disposable tips and one spare bulb each in zipper case with:

	2.5V	3.5V
BETA battery handle	A-131.10.118	
BETA R rechargeable handle		A-131.20.376
BETA TR rechargeable handle and transformer		A-131.20.384
BETA NT rechargeable handle and NT 200 charger		A-131.20.420



Set complete: **BETA 200 Ophthalmoscope, BETA 200 F.O. Otoscope**, with multipurpose illuminator, 1 set of reusable tips, 10 disposable tips and one spare bulb each in zipper case with:

	2.5V	3.5V
BETA battery handle	A-133.10.118	
BETA R rechargeable handle		A-133.20.376
BETA TR rechargeable handle and transformer		A-133.20.384
BETA NT rechargeable handle and NT 200 charger		A-133.20.420



Set complete: **BETA 200 Ophthalmoscope, BETA 200 F.O. Otoscope**, 1 set of reusable tips, 10 disposable tips and one spare bulb each in hard case with:

	2.5V	3.5V
BETA battery handle	A-132.10.118	
BETA R rechargeable handle		A-132.20.376
BETA TR rechargeable handle and transformer		A-132.20.384
BETA NT rechargeable handle and NT 200 charger		A-132.20.420



As A-132 above, but with multi-purpose illuminator with:

	2.5V	3.5V
BETA battery handle	A-134.10.118	
BETA R rechargeable handle		A-134.20.376
BETA TR rechargeable handle and transformer		A-134.20.384
BETA NT rechargeable handle and NT 200 charger		A-134.20.420



Please note: BETA 3.5V rechargeable handles can be supplied with a Lithium battery (**X-007.99.381**) with increased capacity and no memory effect at extra cost. Please specify when ordering.

To order sets with 3.5V BETA handle with Li-ion battery technology, use the number "27" in the voltage designation. E. g. A-131.**27**.420 for the BETA 200 F.O. Otoscope Diagnostic Set with BETA NT handle and charger.



HEINE K 180® Fiber Optic Otoscope

The standard, all around Fiber Optic Otoscope



- ▷ Fiber Optic (F.O.) illumination
- ▷ Polycarbonate construction

Otoscope with Fiber Optic (F.O.) illumination constructed of light, high-impact polycarbonate and 3x magnification scratch resistant acrylic viewing window. Otherwise technically identical to the BETA 200 F.O. Otoscope shown above.

K 180 F.O. Otoscope	2.5V	3.5V
with 4 reusable tips	B-001.11.551	B-002.11.551
same, without tips	B-001.11.550	B-002.11.550
XHL Xenon Halogen spare bulb	X-001.88.077	X-002.88.078

HEINE K 180® F.O. ENT Diagnostic Set



Set complete with **K180 Fiber Optic (F.O.) Otoscope** and 1 set of reusable tips in soft pouch with:

	2.5V	3.5V
BETA battery handle	B-181.10.118	
BETA R rechargeable handle		B-181.20.376
BETA TR rechargeable handle and transformer		B-181.20.384
BETA NT rechargeable handle and NT200 charger		B-181.20.420



Set complete: **K 180 Ophthalmoscope, K 180 Otoscope** and 1 set of reusable tips in zipper case with:

	2.5V
BETA battery handle	A-177.10.118



Set complete: **K 180 Ophthalmoscope, K 180 Otoscope** and 1 set of reusable tips in hard case with:

	2.5V	3.5V
BETA battery handle	A-279.10.118	
BETA R rechargeable handle		A-279.20.376
BETA TR rechargeable handle and transformer		A-279.20.384
BETA NT rechargeable handle and NT200 charger		A-279.20.420



Please note: BETA 3.5 V rechargeable handles can be supplied with a Lithium battery (**X-007.99.381**) with increased capacity and no memory effect at extra cost. Please specify when ordering.

To order sets with 3.5 V BETA handle with Li-ion battery technology, use the number "27" in the voltage designation. E. g. B-181.**27**.420 for the K 180 F.O. Diagnostic Otoscope Set with BETA NT handle and charger.

HEINE alpha+® F.O. Fiber Optic Otoscope

Superior full-size performance in a convenient compact format



∴ Compact format

∴ Fiber Optic (F.O.) illumination

∴ Silicate glass viewing window

Quality instrument for the pocket with Fiber Optic (F.O.) illumination for a perfect view. The first 3.5V Xenon Halogen illumination compact Otoscope.

- ∴ **Distal Fiber Optic (F.O.) illumination with XHL Xenon Halogen Technology.**
Homogenous, reflex-free illumination of ear canal and tympanum.
- ∴ **Optical glass viewing window with 3x magnification.**
Scratch-resistant, high-resolution image.
- ∴ **Swivelling viewing window built into instrument.**
Useful for instrumentation, cannot be mislaid.
- ∴ **Insufflation port.** For pneumatic testing.
- ∴ **High-impact polycarbonate housing with chrome-plated cone for durability.**

alpha+ F.O. Otoscope	2.5V	3.5V
with 1 set (4 pcs.) reusable tips and 5 each disposable tips 2.5 and 4 mm dia., insufflation port connector with alpha+ battery handle 2.5V	D-001.80.120	
with alpha+ rechargeable handle 3.5V		D-002.80.121
with alpha+ rechargeable handle 3.5V and alpha+ NT 200 B charger		D-002.80.114
alpha+ F.O. Otoscope with bulb, without handle and without accessories	D-001.80.108	D-002.80.108
XHL Xenon Halogen spare bulb	X-001.88.037	X-002.88.049

HEINE alpha+® F.O. ENT Diagnostic Set



Set complete with **alpha+ Fiber Optic (F.O.) Otoscope** 1 set = 4 reusable tips and 5 each of 2.5 mm and 4 mm dia. AllSpec disposable tips in hard case with:

	2.5V	3.5V
alpha+ battery handle with batteries	D-195.10.051	
alpha+ rechargeable handle and NT200B charger		D-195.20.444



Set complete with **alpha+ F.O. Otoscope and alpha+ Ophthalmoscope**. Supplied with aperture wheel I. If aperture wheel II or III is required, specify with your order. 1 set = 4 reusable tips, 5 each of 2.5 and 4 mm dia. AllSpec disposable tips in hard case with:

	2.5V	3.5V
alpha+ battery handle with batteries	D-294.10.051	
1 alpha+ rechargeable handle and alpha+ NT200B charger		D-294.20.444
2 alpha+ rechargeable handles and alpha+ NT200B charger		D-294.21.444

HEINE mini 3000® F.O. Fiber Optic Otoscope

Compact pocket otoscope with Fiber-Optic (F.O.) illumination



- Modern pocket otoscope
- Fiber Optic (F.O.) illumination
- Switches off automatically

Modern pocket otoscope in a unique, compact design. Handy and powerful. Can only be used with the mini 3000 handle system.

- **Distal Fiber-Optic (F.O.) illumination with enhanced XHL Xenon Halogen Technology producing 100% more light compared with conventional bulbs.** Homogenous, reflex-free illumination of ear canal and tympanum.
- **Viewing window with 3x magnification** and optimized casing surface for razor-sharp images and minimal reflection. Swivelling viewing window built into instrument.
- **Attachment clip with integrated on/off switch.** Secure. Switches off automatically when returned to the pocket.
- **Insufflation port.** For pneumatic testing of tympanic mobility. Please order connector separately.
- **High-quality handle: Chrome-finish upper section/refined plastic.** Shockproof, sturdy, non-slip.

mini 3000 F.O. Otoscope	2.5V
mini 3000 F.O. Otoscope with mini 3000 battery handle and 1 set (4 pcs.) reusable tips and 5 of both 2.5 and 4 mm disposable tips	D-001.70.120
mini 3000 F.O. Otoscope with mini 3000 battery handle and 5 of both 2.5 and 4 mm disposable tips	D-001.70.110
mini 3000 F.O. Otoscope with bulb, without handle and without accessories	D-001.70.106
XHL Xenon Halogen spare bulb	X-001.88.105
Insufflation port connector	D-000.80.101

Insufflation Bulb



- For pneumatic testing.

Insufflation bulb for BETA 200, K 180 and alpha+ Oscopes	B-000.11.240
Insufflation bulb for mini 3000 F.O. Otoscope with connector	D-000.80.102
Connector for alpha+ Oscope	D-000.80.101

HEINE mini 3000® Otoscope

Compact pocket otoscope with direct illumination



∴ Modern pocket otoscope

∴ Switches off automatically



Direct XHL Xenon Halogen illumination

Modern pocket otoscope in a unique, compact design. Can only be used with the mini 3000 handle system.

- ∴ **Enhanced XHL Xenon Halogen Technology with 100% more light compared with conventional bulbs.**
Very bright, concentrated white light for perfect illumination.
- ∴ **Viewing window with 3x magnification** and optimized casing surface for razor-sharp images and minimal reflection.
- ∴ **Swivelling viewing window built into instrument.** Useful for instrumentation, cannot be mislaid.
- ∴ **Attachment clip with integrated on/off switch.** Secure. Switches off automatically when returned to the pocket.
- ∴ **2-piece handle and head.** Easy to maintain, flexible.
- ∴ **High-quality handle: Chrome-finish upper section/refined plastic.** Shockproof, sturdy, non-slip.
- ∴ **Replaceable batteries.** Size AA.

mini 3000 Otoscope	2.5V
mini 3000 Otoscope with mini 3000 battery handle and 1 set (4 pcs.) reusable tips and 5 of both AllSpec disposable tips 2.5 and 4 mm dia.	D-001.70.220
mini 3000 Otoscope with mini 3000 battery handle and 5 of both AllSpec disposable tips 2.5 and 4 mm dia.	D-001.70.210
mini 3000 Otoscope with bulb, without handle and without accessories	D-001.70.206
XHL Xenon Halogen spare bulb	X-001.88.110



HEINE mini 3000® Diagnostic Sets



Set D-851 complete with **mini 3000 Fiber Optic (F.O.) Otoscope**, 4 reusable tips, 10 AllSpec disposable tips in hard case with:

	2.5V
mini3000 battery handle with batteries	D-851.10.021
as above, but with mini 3000 Otoscope	D-851.20.021



Set D-861 complete with **mini 3000 Fiber Optic (F.O.) Otoscope**, 1 set = 4 reusable tips, 10 AllSpec disposable tips in soft pouch with:

	2.5V
mini3000 battery handle with batteries	D-861.10.021
as above, but with mini 3000 Otoscope	D-861.20.021



Set D-874 complete with **mini 3000 Otoscope**, mini 3000 tongue-depressor for disposable tongue-blades, 1 AllSpec disposable specula 2.5 and 4 mm, 3 disposable tongue-blades in hard case:

	2.5V
with 2 mini 3000 battery handles with batteries	D-874.20.021



Set D-873 complete with **mini 3000 Ophthalmoscope**, **mini 3000 F.O. Otoscope**, 1 set = 4 reusable tips, 5 each of 2.5 and 4 mm dia. AllSpec disposable tips, in hard case:

	2.5V
with 2 mini 3000 battery handles with batteries	D-873.11.021
as D-873 but with mini 3000 Otoscope	D-873.21.021



Set D-883 complete with **mini 3000 Ophthalmoscope**, **mini 3000 F.O. Otoscope**, 1 set = 4 reusable tips, 5 each of 2.5 and 4 mm dia. AllSpec disposable tips, in soft pouch:

	2.5V
with 2 mini 3000 battery handles with batteries	D-883.11.021
as D-883 but with mini 3000 Otoscope	D-883.21.021

All handles are fitted with batteries (IEC LR 6 AA size). Please order spare bulbs separately.

HEINE mini 3000® pocket instruments – a complete range of quality diagnostic instruments for your pocket. Available in black or blue. Please specify the colour you prefer when ordering. If not otherwise specified, we will supply black instruments.

Reusable tips



- ✦ **Made of high-density SANALON S with smooth external finish.** Easy to clean. All common germicides can be used. Autoclavable at up to 134 °C.
- ✦ **Ergonomic shape.** Painless atraumatic insertion.
- ✦ **Positive locking design.** Firm fit to the otoscope head.

Reusable tips (black) for BETA 200, K 180, mini 3000, mini 3000 F.O. Otoscopes

1 set = 4 pcs. reusable tips SANALON S 2.4/3/4/5 mm dia.	B-000.11.111
Reusable tip 2.4 mm dia.	B-000.11.107
Reusable tip 3.0 mm dia.	B-000.11.108
Reusable tip 4.0 mm dia.	B-000.11.109
Reusable tip 5.0 mm dia.	B-000.11.110
Reusable nasal speculum 10 mm dia.	B-000.11.143

Reusable tips



- ✦ **Similar to black reusable tips.** (See above.)

Reusable tips (blue) for alpha+ Otoscopes

1 set = 4 pcs. tips SANALON S 2.4/3/4/5 mm dia.	B-000.11.161
Reusable tip 2.4 mm dia.	B-000.11.157
Reusable tip 3.0 mm dia.	B-000.11.158
Reusable tip 4.0 mm dia.	B-000.11.159
Reusable tip 5.0 mm dia.	B-000.11.160

Soft Disposable tips for reusable tips



Soft disposable tips (black)

Soft disposable tip 3mm dia. 40 pcs./1 pack	B-000.11.141
Soft disposable tip 5mm dia. 40 pcs./1 pack	B-000.11.142

HEINE AllSpec® Disposable tips

▶ **NEW !**



- ✦ **For single use.** Hygienic, no cross-infection.
- ✦ **Original HEINE design.** Firm fit to the otoscope head.
- ✦ **Assured quality.** No sharp edges.

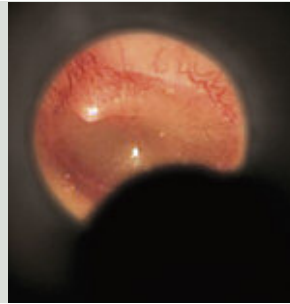
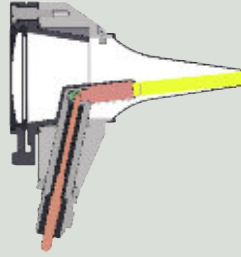
AllSpec Disposable tips (grey) for BETA 200, K 180, alpha+, mini 3000, mini 3000 F.O. Otoscopes

Pack of 1000 2.5 mm dia. (infants) 1000 pcs./1 pack	B-000.11.128
Pack of 1000 4 mm dia. (adults) 1000 pcs./1 pack	B-000.11.127
Case of 10 dispenser packs of 250 tips, 2.5mm dia (infants)	B-000.11.151
Case of 10 dispenser packs of 250 tips, 4mm dia (adults)	B-000.11.150
AllSpec Tip-dispenser	B-000.11.148

The right size, visible and instantly available.
A clean new tip for each and every patient.



Bright XHL Xenon Halogen direct illumination.



HEINE BETA 100® Diagnostic Otoscope

Diagnostic Otoscope with an all-metal housing



▷ All-metal housing

▷ Silicate glass viewing window

▷ Easy instrumentation

An otoscope with direct Xenon Halogen illumination in an elegant all-metal instrument head. Unusually-versatile in combination with nasal and spreadable specula for easy instrumentation. Large-diameter viewing window with 3x magnification made of non-scratch optical glass. The instrument head is matt-black inside to eliminate reflexes.

- ▷ **All-metal housing.** Exceptionally tough and durable.
- ▷ **XHL Xenon Halogen Technology.** Extremely bright, white light.
- ▷ **Large, scratch-resistant glass viewing window with 3x magnification.** Unobstructed view, distortion-free image.
- ▷ **Extensive choice of accessories.** Very versatile e. g. for nasal examination.
- ▷ **Swivelling viewing window built into instrument.** Useful for instrumentation, cannot be mislaid.
- ▷ **Insufflation port.** Reliable test of tympanic mobility.

BETA 100 Diagnostic Otoscope	2.5V	3.5V
with 3 reusable specula 3.5/4.5/5.5 mm dia.	B-001.11.526	B-002.11.526
same, with 6 reusable specula	B-001.11.527	B-002.11.527
same, without specula	B-001.11.525	B-002.11.525
XHL Xenon Halogen spare bulb	X-001.88.037	X-002.88.049
Replacement sleeve for bulb		B-000.11.212

HEINE BETA 100® ENT Diagnostic Sets



Set complete with **BETA 100 Diagnostic Otoscope**, 1 set of reusable specula, 10 disposable specula and spare bulb in hard case with:

	2.5V	3.5V
BETA battery handle	B-236.10.118	
BETA R rechargeable handle		B-236.20.376
BETA TR rechargeable handle and transformer		B-236.20.384
BETA NT rechargeable handle and NT 200 charger		B-236.20.420

HEINE BETA 100® ENT Diagnostic Sets



Set complete with **BETA 100 Diagnostic Oscope**, 1 set of reusable specula and spare bulb in soft pouch with:

	2.5V	3.5V
BETA battery handle	B-238.10.118	
BETA R rechargeable handle		B-238.20.376
BETA TR rechargeable handle and transformer		B-238.20.384
BETA NT rechargeable handle and NT200 charger		B-238.20.420



Set complete with **BETA 100 Diagnostic Oscope**. As B-238 above but with universal speculum (instead of 1 set reusable specula) with:

	2.5V	3.5V
BETA battery handle	B-240.10.118	
BETA R rechargeable handle		B-240.20.376
BETA TR rechargeable handle and transformer		B-240.20.384
BETA NT rechargeable handle and NT200 charger		B-240.20.420



Set complete: **BETA 200 Ophthalmoscope, BETA 100 Diagnostic Oscope**, 1 set of reusable specula, 10 disposable specula and one spare bulb each in hard case with:

	2.5V	3.5V
BETA battery handle	A-234.10.118	
BETA R rechargeable handle		A-234.20.376
BETA TR rechargeable handle and transformer		A-234.20.384
BETA NT rechargeable handle and NT200 charger		A-234.20.420



Please note: BETA 3.5V rechargeable handles can be supplied with a Lithium battery (**X-007.99.381**) with increased capacity and no memory effect at extra cost. Please specify when ordering.

To order sets with 3.5V BETA handle with Li-ion battery technology, use the number "27" in the voltage designation. E. g. B-238.**27**.420 for the BETA 100 Diagnostic Oscope Set with BETA NT handle and charger.



HEINE K 100® Diagnostic Otoscope

Diagnostic Otoscope with a high-impact polycarbonate housing



↳ Polycarbonate construction

↳ Easy instrumentation

A very cost-effective diagnostic otoscope with direct Xenon Halogen illumination. The head is moulded in high-impact polycarbonate, and features a high quality acrylic viewing window with 3x magnification. Matt black interior to eliminate reflexes.

- ↳ **XHL Xenon Halogen Technology.** Extremely bright, white light.
- ↳ **Extensive choice of accessories.** Very versatile e.g. for nasal examination.
- ↳ **Swivelling viewing window built into instrument.** Useful for instrumentation, cannot be mislaid.
- ↳ **Insufflation port.** Reliable test of tympanic mobility.
- ↳ **Excellent value.** An economical alternative to all-metal otoscopes.

K 100 Diagnostic Otoscope	2.5V	3.5V
with 3 reusable specula 3.5/4.5/5.5 mm dia.	B-001.11.576	B-002.11.576
same, with 6 reusable specula	B-001.11.577	B-002.11.577
same, without specula	B-001.11.575	B-002.11.575
XHL Xenon Halogen spare bulb	X-001.88.037	X-002.88.049
Replacement cover for bulb		B-000.11.212

HEINE K 100® ENT Diagnostic Sets



Set complete with **K100 Diagnostic Otoscope**, 1 set of reusable specula, 10 disposable specula and spare bulb in hard case with:

	2.5V	3.5V
BETA battery handle	B-235.10.118	
BETA R rechargeable handle		B-235.20.376
BETA TR rechargeable handle with transformer		B-235.20.384
BETA NT rechargeable handle with NT 200 charger		B-235.20.420



Set complete with **K100 Diagnostic Otoscope**, 1 set of reusable specula and spare bulb in soft pouch with:

	2.5V	3.5V
BETA battery handle	B-237.10.118	
BETA R rechargeable handle		B-237.20.376
BETA TR rechargeable handle with transformer		B-237.20.384
BETA NT rechargeable handle with NT 200 charger		B-237.20.420



Set complete with **K100 Diagnostic Otoscope**, 3 reusable specula in soft pouch with:

	2.5V	3.5V
BETA battery handle	B-245.10.118	
BETA R rechargeable handle		B-245.20.376
BETA TR rechargeable handle with transformer		B-245.20.384
BETA NT rechargeable handle with NT 200 charger		B-245.20.420

Please note: BETA 3.5V rechargeable handles can be supplied with a Lithium battery (**X-007.99.381**) with increased capacity and no memory effect at extra cost. Please specify when ordering.

To order sets with 3.5V BETA handle with Li-ion battery technology, use the number "27" in the voltage designation. E.g. B-235.**27**.420 for the K 100 Diagnostic Otoscope Set with BETA NT handle and charger.

HEINE Operating Otoscope

The most flexibility and options when introducing instrumentation



An all-round otoscope for instrumentation under magnification. Both the lens and speculum can be swivelled. Ideal for use with nasal and spreadable specula.

- ∴ **Open construction.** Ideal for instrumentation.
- ∴ **Swivelling lens and speculum.** Clears the way for access and examination under magnification and illumination.
- ∴ **2.5x lens in protective frame.** Prevents scratching.
- ∴ **The relative positions of light bulb and speculum can be fixed.** Helps with instrumentation, easily returned to normal position.
- ∴ **XHL Xenon Halogen Technology.** Extremely bright, white light.

For use with reusable specula and UniSpec disposable specula. With tip-adaptor (B-000.11.306) it is also possible to use AllSpec disposable tips.

HEINE Operating Otoscope	2.5V	3.5V
with 1 set = 6 reusable specula	B-001.11.494	B-002.11.494
same, without specula	B-001.11.492	B-002.11.492
XHL Xenon Halogen spare bulb	X-001.88.037	X-002.88.049

HEINE Operating Otoscope ENT Diagnostic Set



Set complete with **Operating Otoscope**, 1 set of reusable specula, 10 disposable specula and spare bulb in hard case with:

	2.5V	3.5V
BETA battery handle	B-188.10.118	
BETA R rechargeable handle		B-188.20.376
BETA TR rechargeable handle and transformer		B-188.20.384
BETA NT rechargeable handle and NT200 charger		B-188.20.420



Please note: BETA 3.5V rechargeable handles can be supplied with a Lithium battery (**X-007.99.381**) with increased capacity and no memory effect at extra cost. Please specify when ordering.

To order sets with 3.5V BETA handle with Li-ion battery technology, use the number "27" in the voltage designation. E.g. B-188.**27**.420 for the Operating Otoscope Diagnostic Set with BETA NT handle and charger.



Reusable Specula



- ✦ **Moulded in high-density SANALON S, smooth surface.** Easy to clean, can be disinfected with conventional solutions. Autoclavable at 134°C.
- ✦ **Ergonomic Design.** Painless and atraumatic insertion.
- ✦ **Metal security lock with bayonet fitting.** Long-lasting, positive fit to the otoscope.

Reusable Specula (black) for BETA 100, K 100 and Operating Otoscope

1 set = 5 ear specula and 1 nose speculum	B-000.11.221
3 specula 3.5/4.5/5.5 mm dia.	B-000.11.222
Ear speculum 2.2 mm dia.	B-000.11.215
Ear speculum 2.8 mm dia.	B-000.11.216
Ear speculum 3.5 mm dia.	B-000.11.217
Ear speculum 4.5 mm dia.	B-000.11.218
Ear speculum 5.5 mm dia.	B-000.11.219
Nose speculum 10 mm dia.	B-000.11.220

HEINE UniSpec® Disposable Ear Specula



- ✦ **Disposable.** Hygienic and safe.
- ✦ **Original HEINE design and manufacture.** Fit positively to the otoscope.
- ✦ **Assured quality.** No sharp edges.

UniSpec Disposable Ear Specula (grey) for BETA 100, K 100, Operating Otoscope

Pack of 1000, 2.5 mm dia. (infants) 1000 pcs./1 pack	B-000.11.242
Pack of 1000, 4 mm dia. (adults) 1000 pcs./1 pack	B-000.11.241
UniSpec specula dispenser	B-000.11.146

- ✦ **A clean, new speculum for each and every patient.**
(The right size visible and instantly available.)

Spreadable Nasal Speculum



- ✦ **All-metal construction.** Anatomically-correct rounded shape.
- ✦ **For use with Operating Otoscope, BETA 100 Diagnostic Otoscope and Fiber Optic Nasal Illuminator.**

Spreadable Nasal Speculum	B-000.11.231
---------------------------	--------------

Not recommended for use with K 100 Diagnostic Oscopes.

Universal Speculum



- **All-metal construction.** Opens symmetrically from 2.5 to 15mm.
- **Rotate ring to open branches.** Stays put in any position.
- **For use with Operating Otoscope, BETA 100 Diagnostic Otoscope and Fiber Optic Nasal Illuminator.**

Universal Speculum

B-000.11.239

Not recommended for use with K 100 Diagnostic Oscopes.

Tip-Adaptor



- **All-metal construction.** Adaptor for AllSpec disposable tips for use with diagnostic and operating otoscope.

Tip-Adaptor

B-000.11.306

Insufflation Bulb



For Diagnostic Oscopes.

- **For pneumatic testing.**

Insufflation bulb

B-000.11.240